



SOBOBA BAND OF LUISEÑO INDIANS

TRIBAL ADMINISTRATION

Physical Address: 23906 Soboba Rd. San Jacinto, CA 92583 | Mailing Address: P.O. Box 487 San Jacinto, CA 92581

SOBOBA BAND OF LUISEÑO INDIANS

Soboba Tribal Administration

REQUEST FOR PROPOSAL (RFP)

DONNA WAY OFFICES

GENERAL CONTRACTOR

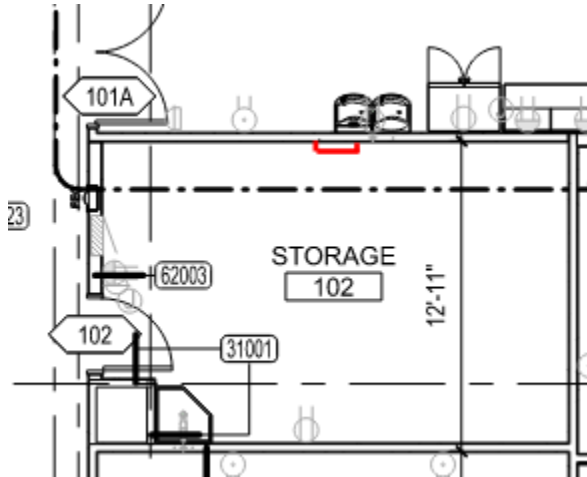
ADDENDUM 4

August 6, 2024

1. The bid due date is Thursday, August 15, 2024, by NOON pm PST. Email to kbrennan@soboba-nsn.gov and mrecendez@soboba-nsn.gov
2. Sealed proposals – 8 copies – can be delivered by noon the next day, August 16, 2024, as long as your email was received by the bid due date and time. Proposals delivered on August 16 that were not previously emailed will not be accepted.
3. AIA 102-2017 Agreement Between Owner and Contractor where the basis of payment is the Cost of Work Plus a Fee with a Guaranteed Maximum Price along with AIA 201-2017 General Conditions of the Contract for Construction. Copy attached for review.
4. A/C Paving – revise to a 1.5" grind and overlay.

5. Electrical Room—clarification—the New Distribution Board, 'LR,' is the Contractor's responsibility. Only the existing switchboard, 'MSBE,' will be reused.

6. Install existing roof ladder in Room 102.



Field measure for location.

ANSWERS TO QUESTIONS:

- A. Do we carry a budget for the repurposed reception desk? Note C.1? *The desk will not be repurposed; figure out a new reception desk.*
- B. Please specify material for door type C. Door type D
- C. How many LF shall we extend the roof drain and how many roof drains to extend? *Work deleted above.*
- D. Please verify that gutters and downspouts are to be in phase 1. *Correct.*
- E. There are smoke detectors and notification throughout the building. Are those still connected to? *Fire Alarm System is provided by the Tribe, including the smoke detectors. NIC*
- F. DETAILS ARE PROVIDED ON THE DRAWING AND ELECTRICAL INDEX, LEGEND FOR LOCATIONS AND QUANTITIES OF COMMUNICATIONS CABLE/OUTLETS. HOWEVER, THERE IS NO DETAILS NOR SPECIFICATIONS FOR THE TYPE OF CABLES REQUIRED AT THESE LOCATIONS. *Below is the specifications for the*

low voltage and there is an attached Low Voltage Plan with types and locations.

The Low-Voltage package is an Alternate. The General Contractor can provide a price. It is not mandatory to submit pricing for this package. The Low-Voltage Package will be listed as an Alternate on the Bid Form. Under Electric, there is a line item for Low-Voltage, but that is the installation of the conduit only. The conduit price remains under Electrical. Furnishing and installing the low-voltage components is an Alternate price.

Low Voltage Package:

- Quad CAT 6 Wall Plates and Connections (4 Connections for every location)
- Single 1 Inch Conduits to each drop
- J-Hook Home Runs from the Data Center to all drops

Color Coordinating Requirements:








1. Surveillance Camera Data Location=**BLACK**
2. Fire & Security Alarm=**RED**
3. Workstation, Phone, and Access Points=**BLUE**
4. IoT Electrical and Water Panels=**BLUE**

Scope of Work

- A. Server Room Build-Out** 1. Provide and install (3) APC 750mm wide AR3150 cabinets with (1) ACRD100 in-row cooling system per the provided layout. - (1) Condenser fan, (1) leak sensor, & (1) temperature sensor - (6) Zero-U PDUs, 30A, 200V & 208V w/ (36) C13s & (6) C19s - (2) APC Smart-UPS, 10kW, 9U with touchscreen & network management card - (3) Sets of 8, vertical cable management rings - (2) NetShelter vertical cable managers - Onsite start-up service, assembly services, and semi-annual preventative maintenance included*Full APC BOM listed below. See the specification cut sheets and floor plan provided for additional information.
- B. B. Ladder Tray** 1. Provide and install an 18" ladder tray system supported above cabinets and along two walls within the room. The final layout must be verified with the client before ordering.
- C. C. Horizontal Cabling** 1. Provide and install (255) total Category 6 plenum-rated cables from the Server Room to 1st Floor workstation locations. - Quote is based on (66) 4-cable workstations. The final workstation layout must be verified with the client before scheduling installation. 2. Provide and install (25) total Category 6 plenum-rated cables from the Server Room to (42) camera locations.

D. D. Camera Installation 1. Provide and install (25) total cameras in various locations. Confirm camera type and locations before ordering and installation.

E. Floor Plan Attachment

1.  WI-FI LOCATIONS = 10
2.  DATA LOCATIONS = 50 QUAD CAT 6
DATA RUNS(BLUE)-200 Individual Cable Count
3.  SECURITY CAMERA = 21
4.  KRONOS UKG CLOCKS = 2
5.  ACCESS CONTROL = 8
6.  FLOOR BOXES = 3
7.  CEILING POLE 2-INCH RUNS (4 QUAD
DATA RUNS THROUGH EACH POLE) = 3
8. **ADD 10** Contingency runs for potential IoT devices, such as Security Alarm Panel, Water Panels, Fire Panel, Generator, or Kitchen Equipment